

PRESENTATION DDH UPDATE

New Design, New Features

New User Interface: Menu Bar ("Ribbon")

Presentation now has a "Menu bar" or "Ribbon".

All functions which were hidden in menus and sub-menus before can now be found here.

Application Button:

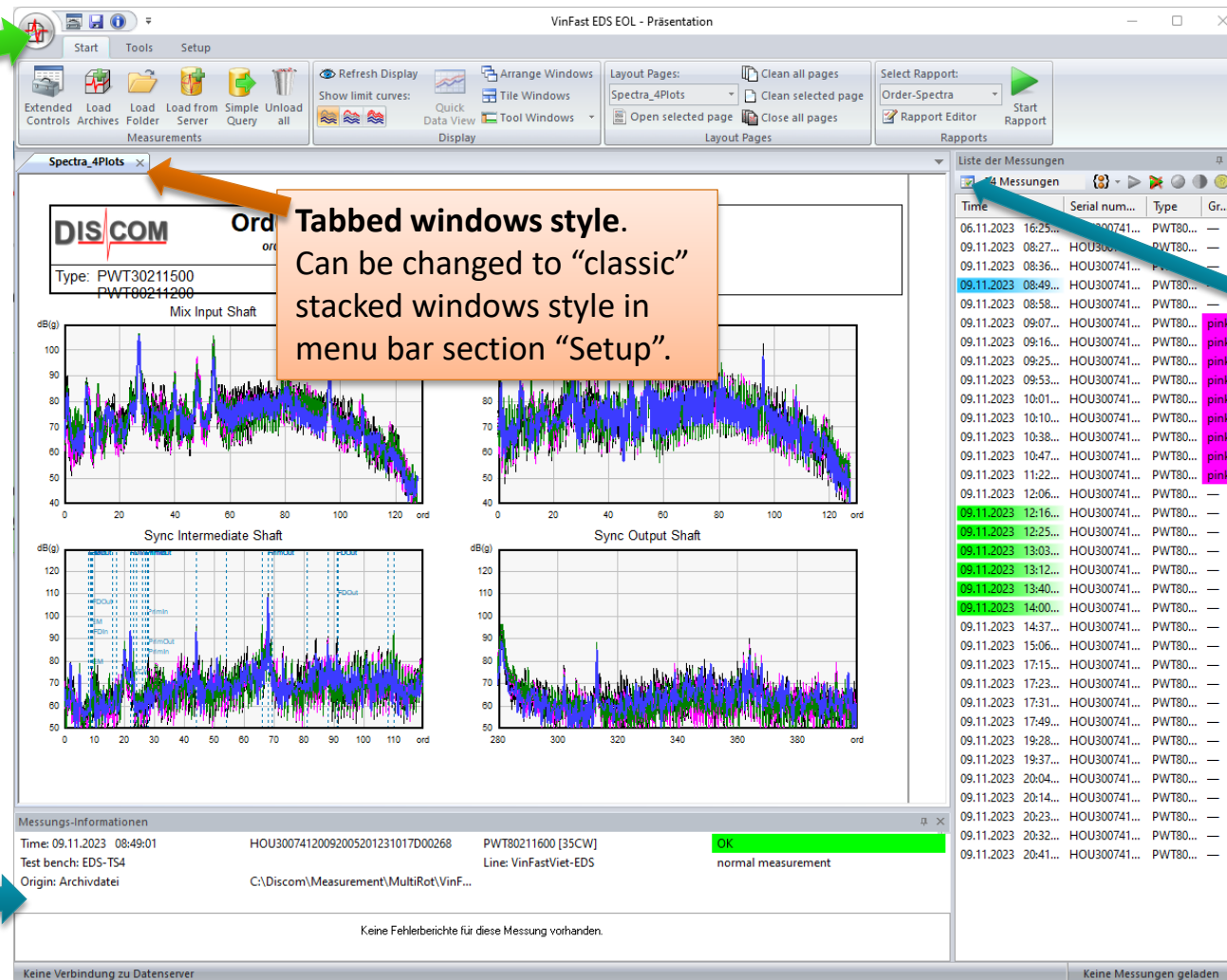
Commands for printing, saving and emergency exit are accessed via this button.

Important:

Automatic saving is now by default turned off! (Can be turned on in the Application Button menu.)

Measurement Information

docking window shows information for focus measurement.



Tabbed windows style.

Can be changed to "classic" stacked windows style in menu bar section "Setup".

List of Measurements

docking window.

Set the focus by double-click. Use the buttons above the list to group measurements, mark or hide measurements.

Press first button to open column selection

'Ordinal' and 'ThisLast' are now available as list columns (for measurements from result database).

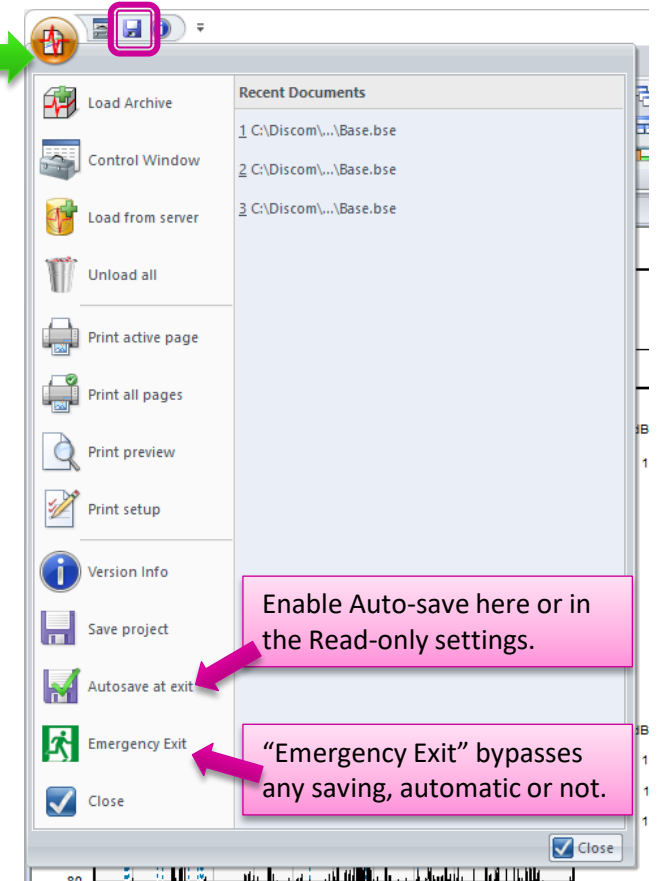
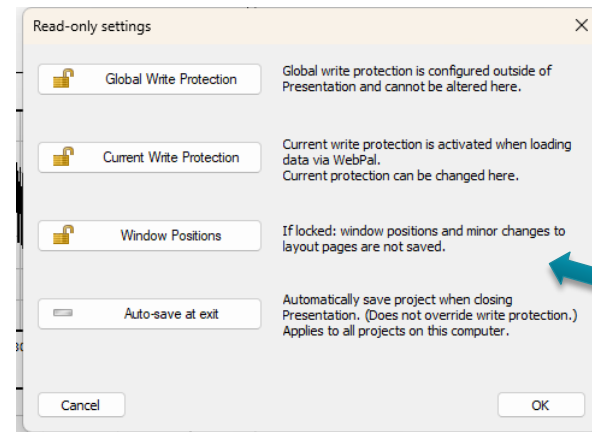
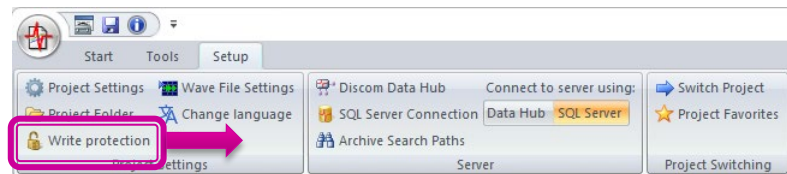
Automatic Saving and Write Protection

By default, **Auto-Save** at exit is now switched off. Changes to your project are only saved if you press the save button (in the main title bar or the Application Button menu).

Presentation tries to detect “major” changes to your project (like Layout editing) and warn you before closing to save your work.

Global write protection for a project can be enabled by setting the “Read Only” property of the project base file Base.bse in Windows file explorer.

Rdt files downloaded from WebPal contain special tags marking them as WebPal exports. If such a file is loaded, Presentation activates **Current Write Protection** mode to prevent unintended changes. Current write protection can be altered in the Read-only settings, which are accessed via the *Setup* menu bar section:

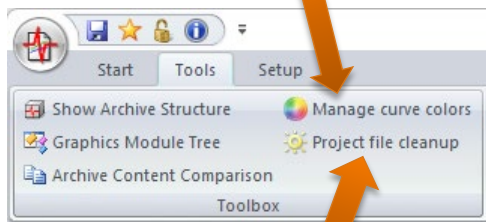


Window positions (in “classic” stacked window style) can have a separate write protection.

Old and New Tricks

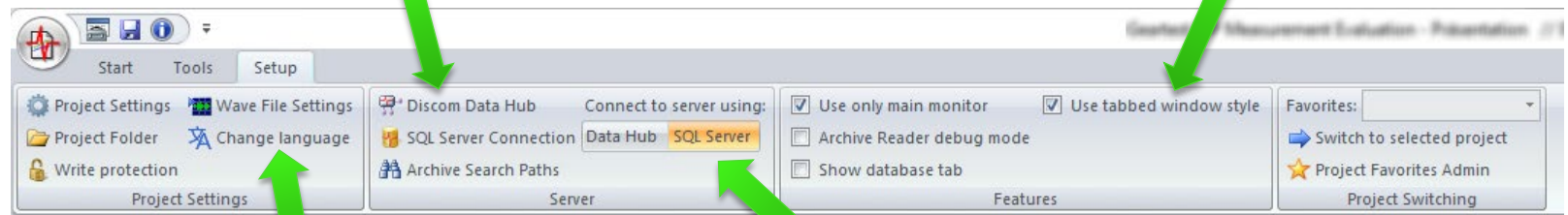


The global color table can now be managed directly from the *Tools* section of the menu bar.



Project file cleanup directly saves your project and removes unused entries in the layout files.

Edit DDH server and SQL server connections in *Setup* section.

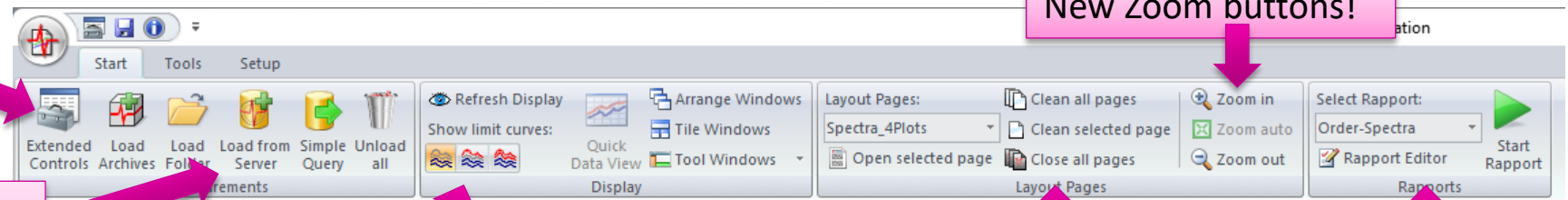


Switch between window styles here. Changing window style requires a restart of Presentation.

Switch user interface language here. (Currently, not all parts of Presentation are available in all languages.)

Toggle between DDH connection method and SQL server connection.

Open the well-known "Experts" window here



Load from Server and *Simple Query* will work for the currently activated server connection method (see Setup section above).

Showing limits or not now has radio buttons (finally!)

New Zoom buttons!

These parts works as before but look much nicer.

Get Results for a Serial Number (fast)

Using the “Simple Query”, you can easily get the results for any measurement by serial number.

(2) Press [Simple Query]

(1) Press [Unload all] to remove previously loaded measurements

After loading the measurement, you can start a Rapport to display curves and other data.

By default, you will get the last measurement for the serial number. Select V or XX to get more measurements for the same serial number (if present)

(3) Enter serial number and press [Go!]

Time, serial number, result and defect messages (if existing) are displayed in the “Measurement Information” window.

4

4

4

4

The List of Measurements

The new dockable window with the list of measurements gives quick access to the most used functions. Other functions can be found in the menu bar *Tools* section.

Grouping: open menu to place selected measurements into a group.

Mark/Unmark selected measurements

Set focus to (first) selected measurement

Hide/Unhide selected measurements

Column selection

Unload selected measurements

Selected measurement

Focus measurement. Set Focus by double-clicking on a list row.

Marked measurements

Click into a column header to sort the list by this column.

Measurement groups

Time	Type	OK/X	Group
23.05.2024 09:26:16	OTA.904.113	OK	—
23.05.2024 09:29:41	OTA.904.113	OK	—
23.05.2024 09:40:23	OTA.904.113	OK	—
23.05.2024 09:41:52	OTA.904.113	OK	—
23.05.2024 09:44:11	OTA.904.113	OK	—
23.05.2024 09:45:55	OTA.904.113	OK	—
23.05.2024 09:51:53	OTA.904.113	OK	—
23.05.2024 09:53:17	OTA.904.113	OK	WOW
23.05.2024 09:54:40	OTA.904.113	OK	WOW
23.05.2024 09:56:09	OTA.904.113	OK	—
23.05.2024 09:57:52	OTA.904.113	OK	reference
23.05.2024 09:59:45	OTA.904.113	OK	reference
23.05.2024 10:53:32	OTA.904.113	OK	reference
23.05.2024 10:55:37	OTA.904.113	OK	reference
23.05.2024 10:57:17	OTA.904.113	OK	—
23.05.2024 10:59:04	OTA.904.113	OK	—
23.05.2024 11:00:32	OTA.904.113	OK	—
23.05.2024 11:03:34	OTA.904.113	OK	—
23.05.2024 11:05:32	OTA.904.113	OK	—
23.05.2024 11:07:41	OTA.904.113	OK	BOB
23.05.2024 11:09:11	OTA.904.113	OK	BOB

Copy list of measurements to clipboard or save to file. Different file formats can be selected.

Export data of selected measurements

Sort marked measurements to top of list.

Copy to clipboard

Save list to file

Export rdt file

Save Workspace

Load Workspace

Marked to top of list

Filter and mark

Group administration

List of Measurements

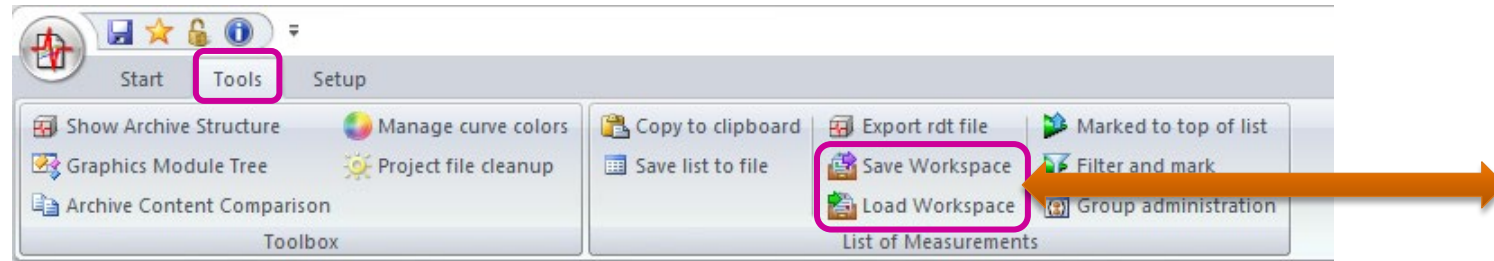
List Export: the list is exported as it is currently displayed.
Example 1: If you want to export only the list of serial numbers, use the Column Selection to hide all other columns, then export the list as plain text.
Example 2: If you want to export only the measurements in one group, use the Group Administration to hide all other groups and measurements.

Workspace: See next page

Filter and Mark: use a filter to mark measurements. For example, find all measurements with a certain serial number element or type name.

Saving Your Current Work

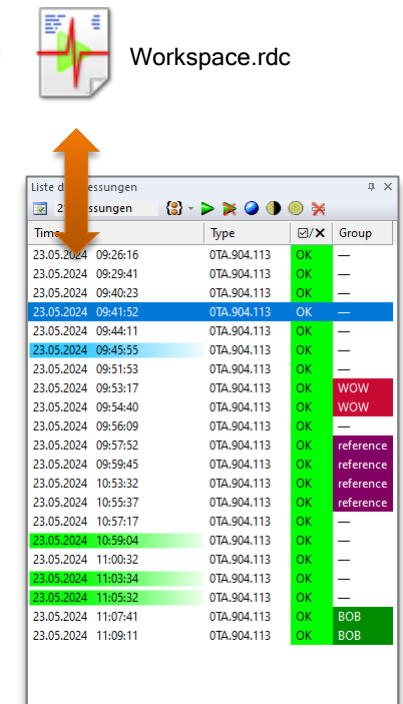
Use [Save Workspace] in the *Tools* section of the menu bar to save your current work state to a file:



You will be prompted for a file name. The file type is 'rdc' (the same file type as WebPal uses for communication with Presentation).

The rdc file saves the origins of all currently loaded measurements (from server or from files), their current state (focus, marked, hidden) and all group associations. It also saves your current setting regarding list columns and data tree organization.

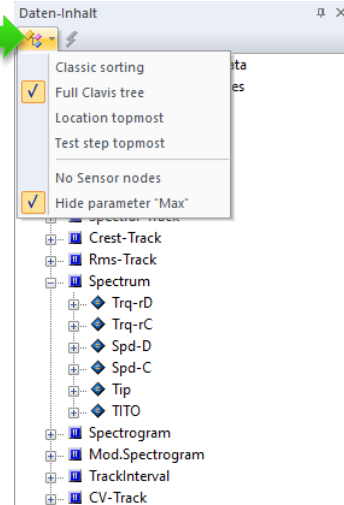
When you open a rdc file (by double-click, drag and drop into Presentation, via menu bar button or application menu), all measurements will be loaded again, from the server or from files. (The files must still be in the same location as they were when you saved the rdc file.) Focus, marking and hiding are restored, and measurements are placed into the same groups as before. (The groups must still have the same names as when you saved the rdc file. The groups itself are part of the project and not stored in the rdc file.)



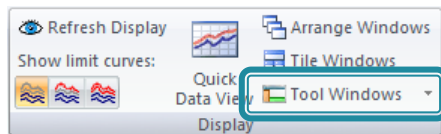
New Data Content Window

The new Data Content Window is docked to the left edge of Presentations main window.

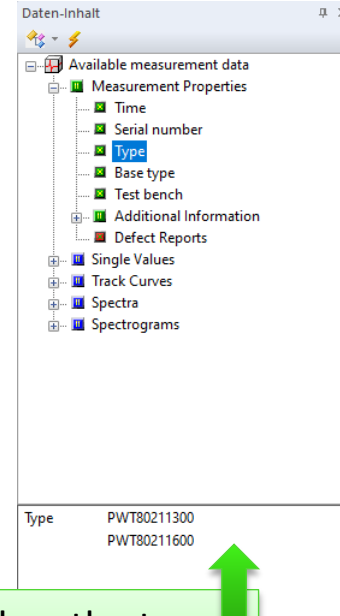
You can switch between different tree organization structures using this toolbar button.



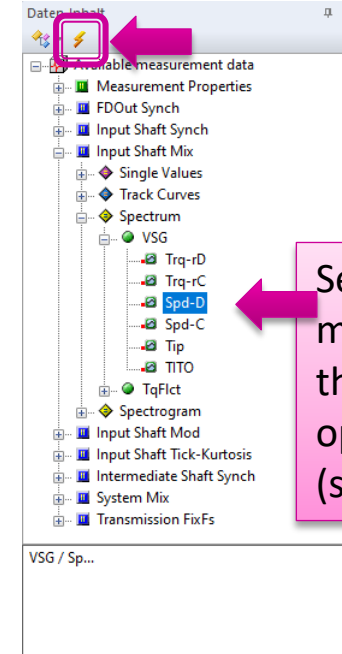
If the Data Content window is closed, you can open it from the Menu Bar (Start section):



The info area below the tree shows more information for the selected node.

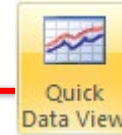


Select a node with measurement data and press the second toolbar button to open the Quick Data View (see next page)



More functions (data export for example) will follow!

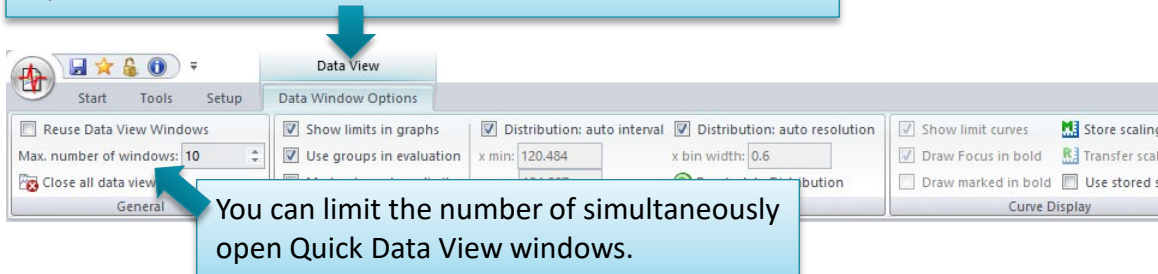
Introducing Quick Data View



Select a node with measurement data in the Content tree and press the 'Quick Data View' button (either in the Menu Bar or in the small toolbar of the Content window).

- For **single values**, a statistical analysis is generated.
- For **spectra and tracks**, you will get the measured curves displayed (see next page).
- Quick Data View for **general information** nodes (for example, the wave file name) is also available.
- Upcoming: Quick Data View for **defect reports**.

Quick Data View windows have an extra Menu Bar.



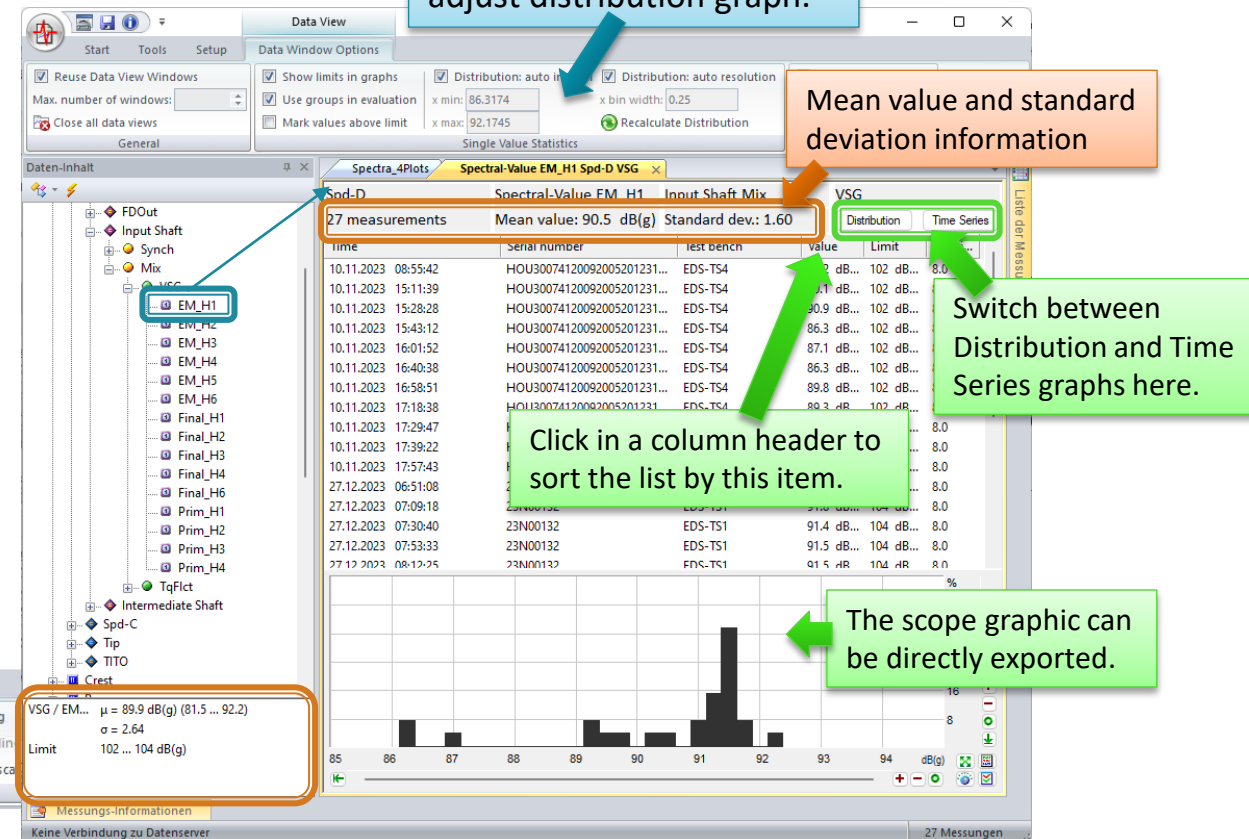
Use menu bar options to adjust distribution graph.

Mean value and standard deviation information

Switch between Distribution and Time Series graphs here.

Click in a column header to sort the list by this item.

The scope graph can be directly exported.



Quick Data View for Curve Data

Quick Data View for curves and spectrograms opens a “Scope” window (similar to the display of TasWavEditor).

How to use stored scaling:

- Press [Store scaling] to place the current scaling settings into memory.
- Press [Transfer scaling] in this or any other Quick Data curve window to apply the memorized scaling.
- Check [Used stored scaling] to directly use the memorized scaling in new Quick Data View curve windows.

Stored Scaling also works in parallel for the scopes in single value statistics.

